

Emergency Preparedness and Response Action Plan (COVID-19)

**Dzongkhag Administration
Zhemgang
16th March 2020**

Dzongkhag Profile

- Eight Gewogs (Four each in Upper and Lower Kheng)
- Total area – 2421.74 km²
- Bordered by five Dzongkhags – Bumthang, Mongar, Pemagatshel, Sarpang, and Trongsa.
- Sharing border Ngangla Gewog with District of Baksa, State of Assam, India
- 699 kms. of porous Border with India in the South

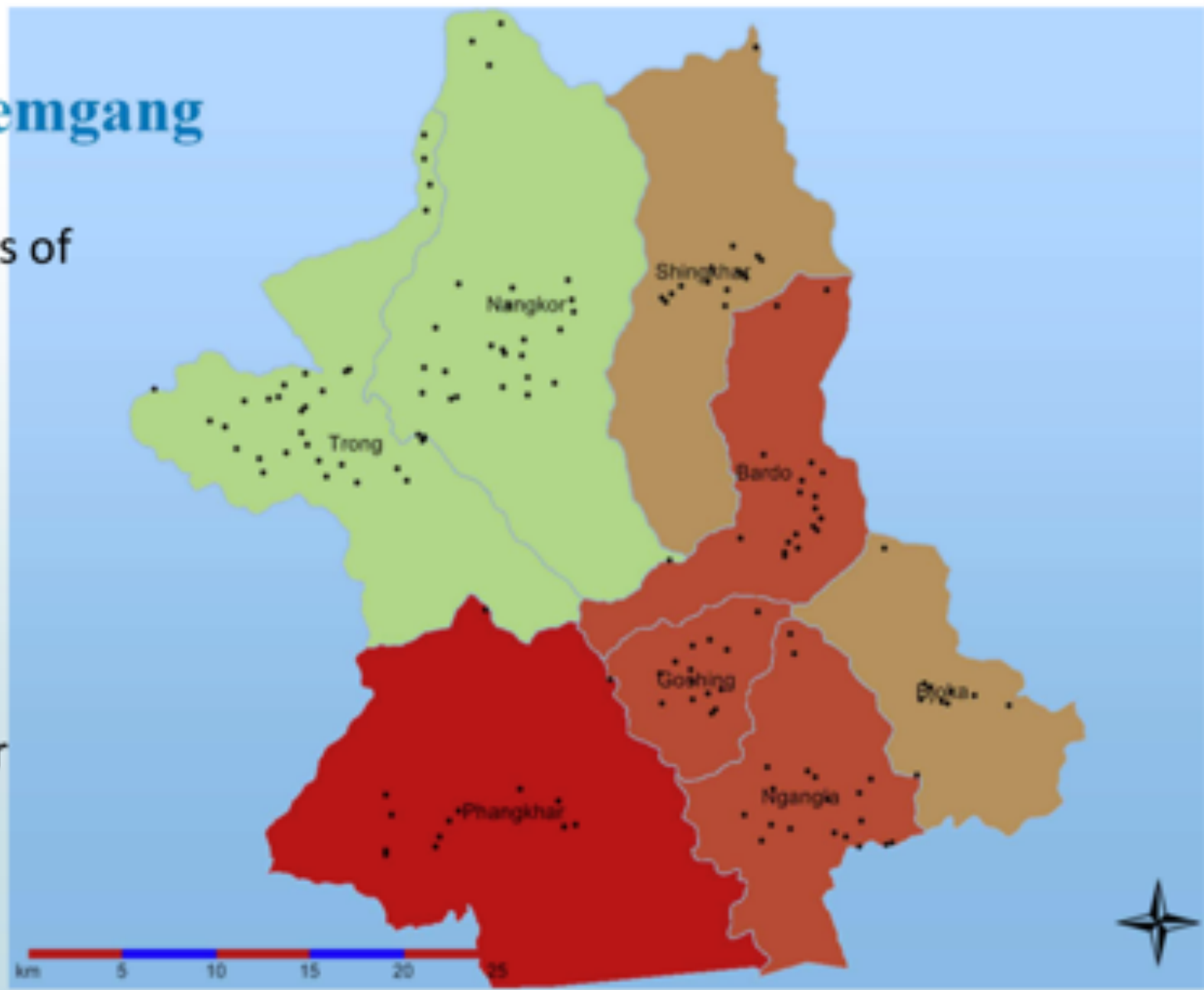
Shares boarder
with Bumthang,
Trongsa, Mongar,
Sarpang and
Pemagatshel
Dzongkhags



Map of Zhemgang

Eight Gewogs of
Zhemgang

- ❖ Bardo
- ❖ Bjoka
- ❖ Goshing
- ❖ Nangkor
- ❖ Nangla
- ❖ Phangkhar
- ❖ Shingkhar
- ❖ Trong



Overall Population Profile

Gewogs/Town	Male	Female	Total
All Eight Gewogs	5310	5660	10970
Zhemgang Town	1019	1004	3661
Tingtibi Town (534)	NA	NA	
Panbang Town	533	571	
Total (A)			14631
Civil Service Sector	233	107	340
School Teaching and Non-Teaching Staff	344	211	555
Corporate Sector	76	23	99
Total (B)			994
Total A+B			15625

Source: Annual Household Survey 2018

Gewog and Throm wise Population Detail Domiciled in Zhemgang

Sl. No.	Gewog/Throm	Male	Female	Total	Remarks
1	Bardo	847	783	1630	
2	Bjoka	323	340	663	
3	Goshing	481	524	1005	
4	Nangkor	591	713	1304	
5	Ngangla	857	956	1813	
6	Phangkhar	535	566	1101	
7	Shingkhar	449	459	908	
8	Trong	1227	1319	2546	
9	Zhemgang Throm	1019	1004	2023	
10	Tingtibi Thromg	NA	NA	534	
11	Panbang Throm	533	571	1104	
	Total Population			14631	

Source: Annual Household Survey 2018

Risk/Vulnerability Assessment

- Long, open and porous border with Baksa and Barpeta Districts, Assam stretching 8 kms. International Border Pillars from 200-204
- High frequency of Bhutanese traveling via Panbang, Basnbari, Royal Manas National Park, Tingtibi, Nganglam and Trongsa. (2223 people screened as of 15.03.2020)
- High frequency of non-national day visitors coming to Panbang via Mathanguri, India

Contd...

- Lack of advocacy, surveillance and screening of COVID-19 across the border
- Possible outbreak of dengue and malaria with onset of monsoon especially at Panbang
- Non-declaration of travel history by the travelers at the checkpoint

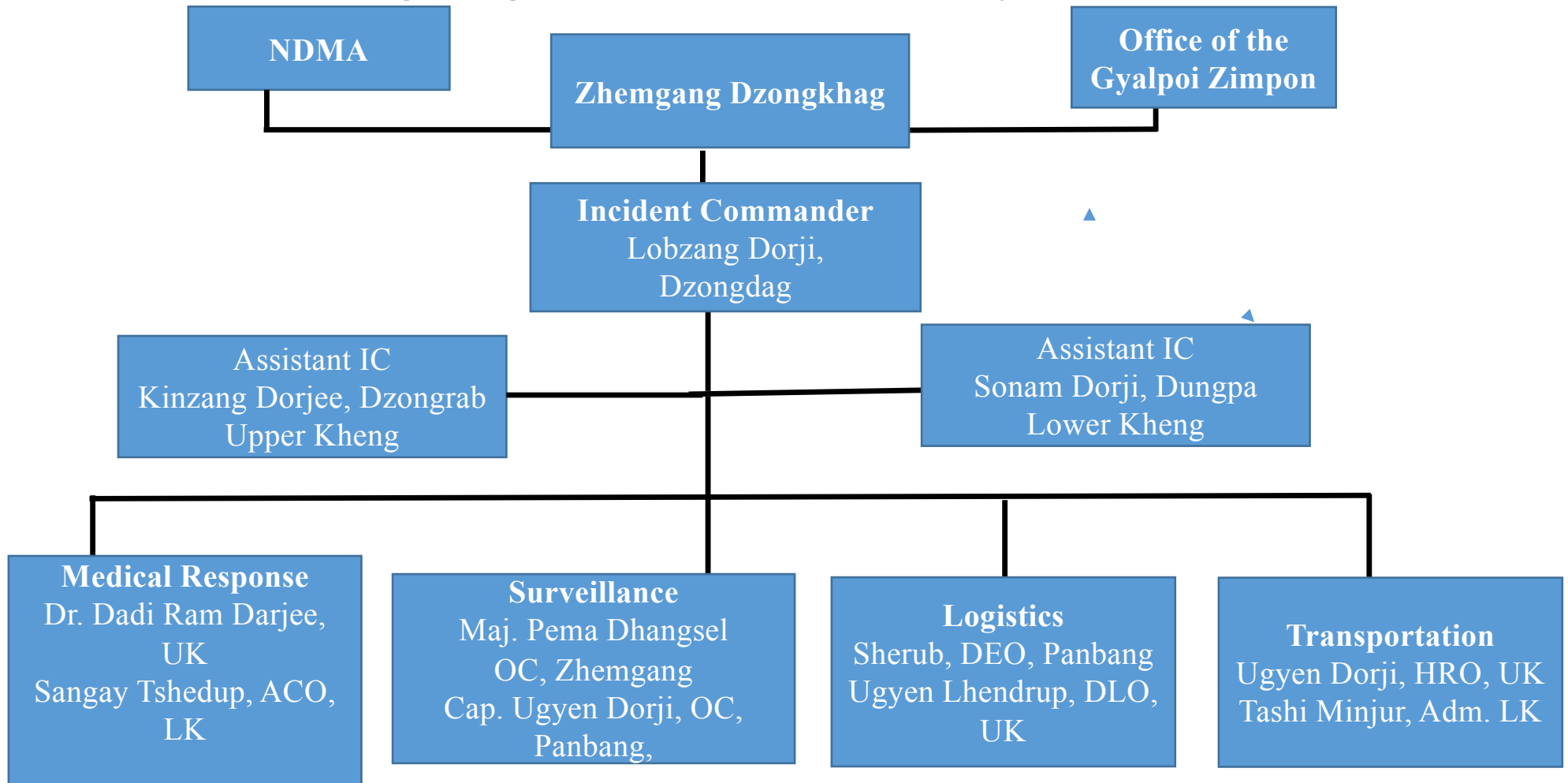
Measures Undertaken

- Stakeholders' Coordination Meeting conducted on 6th & 7th March 2020 and received Royal Audience on 16th March 2020 at DCCL conference hall at 11:30 AM – 2 PM.
- Constituted Dzongkhag Taskforce for COVID-19
- Established 3 health screening and surveillance points at Panbang checkpoint, Tingtibi Tri-junction, and Wangdigang Tri-junction on 07.03.2020 till further notice
- Conducted aggressive advocacy and awareness in schools, institutions, business communities and Gewogs

Contd...

- Notified public to avoid mass gatherings and casual travels to border towns
- Instituted and distributed hand sanitizers to the institutions and offices
- Established Flu Clinics at all three Hospitals under Zhemgang
- Set-up isolation and quarantine facilities in all three hospitals under Zhemgang

Dzongkhag Incident Command System (DICS)



Dzongkhag COVID-19 Response Team

Sl. No.	Name	Designation	Responsibility	Contact Number
1	Lobzang Dorji	Dzongdag	Dzongkhag Incident Commander	17832085
2	Kinzang Dorjee Sonam Dorji	Dzongrab Dungpa	Vice Incident Commander	17699898 17666073
3	Maj. Pema Dhangsel Cap. Ugyen Dorji	OC, Zhemgang OC, Panbang	Collaboration of Screening & Surveillance, Evacuation, Contact Tracing, Security Management and Law enforcement	17800394 17349860
4	Dr. Dadi Ram Darjee Sangey Tshedup	GDMO ACO	Medical Response	17612234 17886259
5	Ugyen Lhuendrup Sherab	DLO, Zhemgang DEO, Panbang	Logistics arrangements	17682723 77107959
6	Ugyen Dorji Tashi Minjur	HRO, Zhemgang Adm. Panbang	Transportation arrangements	17381452 17932611
7	Wangyel Rinchen Wangdi	Gup, Trong Gup, Ngangla	Liaison and coordination for UK Gewogs Liaison and coordination for LK Gewogs	17856759 17686938
8	Tashoi Choden Sangey Penjor	Thromde Thuemi BCCI Representative	Liaison and coordination for UK Throm Liaison and coordination for LK Throm	17316302 ??
9	Jambey Ugyen Sonam Dorji	Desuup Coordinator for UK Desuup Coordinator for LK	Back up services	17610599 17514164

Isolation Facilities

Sl. No.	Location	Facility	Capacity (Bed)	Responsibility
1	Pediatric and TB wards at Yebilaptsa	Hospital based	12	Dr. Dadi Ram Darjee, GDMO, #17612234 Email id. draconis2289@gmail.com
2	Doctor's quarter at Zhemgang Hospital	Hospital based	2	Dr. Tandin Wangchuk, GDMO #77343424 Email id. tandinleo3@gmail.com
3	Ultrasound room at Panbang Hospital	Hospital based	3	Sangay Tshedup, ACO #17886259 Email id. stshedup@gmail.com

Quarantine Facilities

Sl. No.	Name of Agency	Facilities	Capacity	Responsibility
1	BPC Guesthouse	Prepacked meals, Mineral water, Water boilers, laundry, beds, toilet, towels, Soaps, slippers, toiletries, wifi, medical PPE, waste management	10 beds	Thinley Tobgyel, ADHO, #17122680 Email id. ttobgyal@zhemgang.gov.bt
2	Election Office	Prepacked meals, mineral water, water boilers, laundry, beds, toilet, towels, Soaps, slippers, toiletries, wifi, medical PPE, waste management	10 beds	-Do-
3	Bird View Hotel	Prepacked meals, mineral water, water boilers, laundry, beds, toilet, towels, Soaps, slippers, toiletries, wifi, medical PPE, waste management	10 beds	Sangay Tshedup, ACO #17886259 Email id. stshedup@gmail.com

Quarantine Backup Facilities

Sl. No.	Name of Agency	Facilities	Capacity	Responsibility
1	Old Tama High School campus and nearby schools	Prepacked meals, Mineral water, Water boilers, laundry, beds, toilet, towels, Soaps, slippers, toiletries, wifi, medical PPE, waste management	Need based	Thinley Tobgyel, ADHO, #17122680 Email id. ttobgyal@zhemgang.gov.bt
2	Old DE residence for Zhemgang town	Prepacked meals, mineral water, water boilers, laundry, beds, toilet, towels, Soaps, slippers, toiletries, wifi, medical PPE, waste management	Need based	-Do-
3	Manas Hotel and nearby schools	Prepacked meals, mineral water, water boilers, laundry, beds, toilet, towels, Soaps, slippers, toiletries, wifi, medical PPE, waste management	18 beds	Sangay Tshedup, ACO #17886259 Email id. stshedup@gmail.com

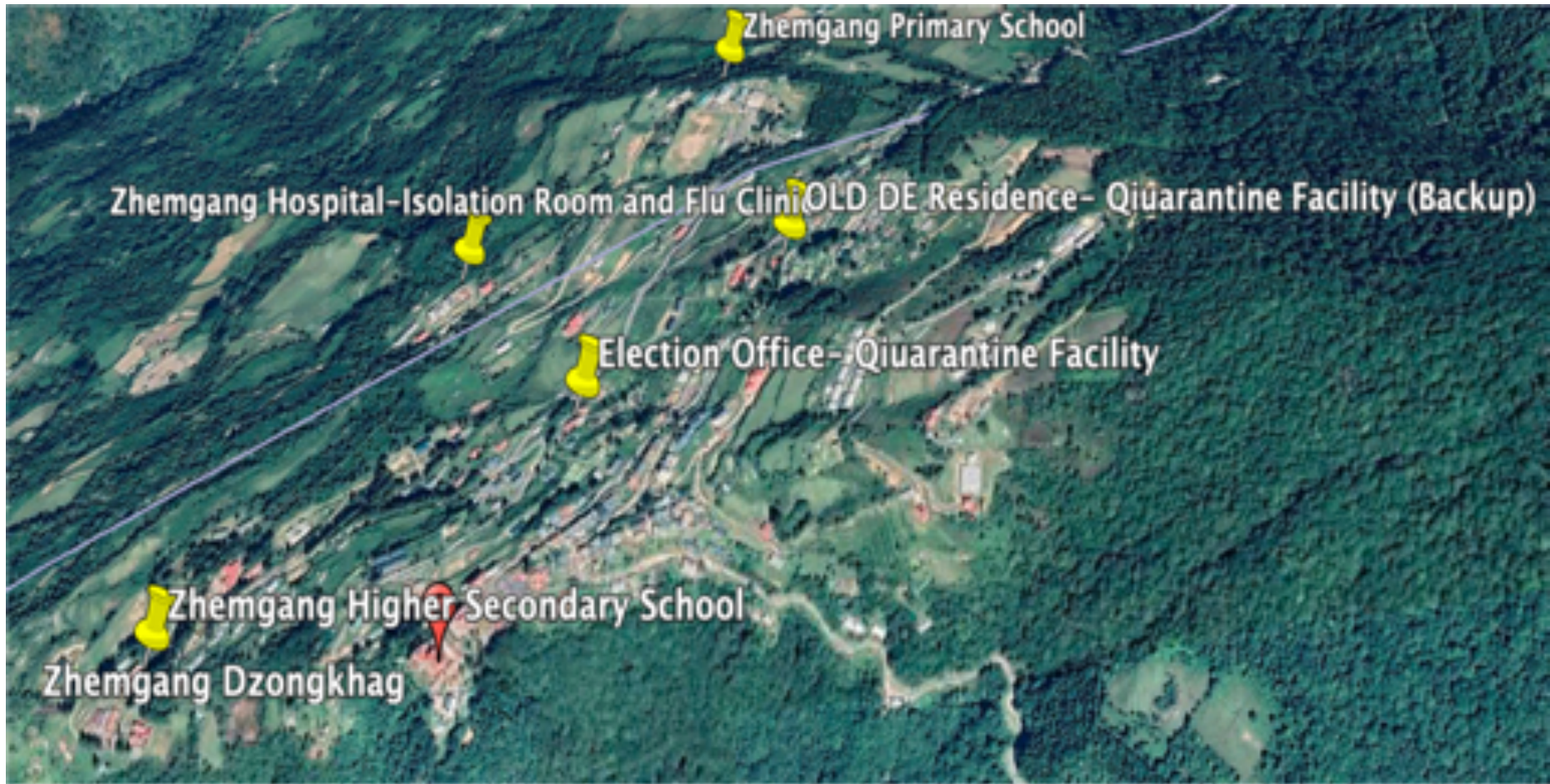
Map showing the Quarantine Facility and Isolation Room in Yebilaptsa Hospital



Panbang Town Map showing quarantine facilities and Isolation Room



Map of Zhemgang town showing Quarantine Facility and Isolation Room in Zhemgang Hospital



Situation: Yellow

Scenario: No confirmed cases of COVID-19 in Zhemgang

Situation	Measures
Situation normal	<ul style="list-style-type: none">• Continue implementing the existing measures put in place• Engage Local Leaders of the Eight Gewogs and Throm Representatives for advocacy and awareness• Enforce the SoPs and Government Directives• Conduct daily COVID-19 awareness and screening at the Three POEs• All schools in Zhemgang will conduct advocacy and awareness during assembly everyday

Contd./

Situation	Measures
Normal	<ul style="list-style-type: none">• All Hospitals conducting advocacy for passenger buses plying within the jurisdictions of Zhemgang• Engage De-suups in creating awareness on COVID-19 prevention and control measures• Train Desuups how to handle medical equipment as standby• All asymptomatic travelers from affected countries shall be advised for home quarantine for 14 days from the day of arrival into the country

Contd./

Situation: Yellow	Additional Measures
Situation normal	<ul style="list-style-type: none">• Monitor compliance with public notifications• Mobilize health professionals from the pool of HAs from PHCs and retired health officials as well

Situation : Orange

Scenario: one or more isolated confirmed cases in Zhemgang without secondary transmission

Situation: Orange	Measures
1. Panic within the community	1. Activate Incident Command System
2. Panic purchasing leading to hoarding of essential food supplies and price escalation	2. Activate Rapid Response Team led by respective clinicians (SoP in place)
3. Possible migration out of Zhemgang	3. Partial lockdown of Zhemgang if necessary
4. Shortage of fuel and medicines	4. Scale up advocacy and counselling to address panic among population

Contd./

Situation: Orange	Measures
5. Pressure on the limited medical facilities at the all Hospitals	5. Strictly monitor and regulate price of essential commodities
6. Shortage of manpower for surveillance and support services	6. Closure of all schools
7. Adverse impact on business industry	7. Alert medical back up teams from the all PHCs

Contd./

Situation	Measures
Orange	<p>8. Mobilize Desuups, Red Cross Volunteers and Teachers(74+25+???)</p> <p>9. Cordoning the designated isolation and quarantine facilities by the RBP</p> <p>10. Strict enforcement of mandatory declaration of travel history</p> <p>11. Continue enforcement of prohibition on all public gatherings</p> <p>12. Provide advisory to avoid all non-essential travels to border towns</p>

Contd./

Situation	Measures
Orange	<p>13. Conduct coordination meetings with counterparts of Baksa and Barpeta on cross border movement of goods, border management and security</p> <p>14. Step up health monitoring and surveillance in the Gewogs</p> <p>15. Step up mobile surveillance along the border areas</p> <p>16. Carry out contact tracing as per the established protocol</p>

Situation: Red

Scenario: Multiple cases with local transmission

Situation: Red	Measures
Multiple cases in Zhemgang and across the border	Lockdown and complete sealing of border
Extreme panic within the community	All medical supplies required for Zhemgang will be mobilized from MSDD
Mass exodus to the other parts of the central Bhutan	Rationing the distribution of essential items
Breakdown in supply chain of essential items	
Possible disruption of law and order in the community	

Contd./

Situation: Red	Measures
<ul style="list-style-type: none">• Extreme stress on health infrastructure, medical supplies, and manpower• Shortage of essential food items and fuel supply• Likelihood of COVID-19 infection spreading to neighbouring Dzongkhags• Non availability of ventilators• High negative impact on local economy	As above

Projection of essential food items for 50% of the population (15625) for 3 months

Sl. No.	Items	Requirement	Current Stocks	Shortfall
1	Rice (400g/day/head	263.36 MT	NA	262.36 MT
2	Cooking Oil (45 g/day/head)	29.63 MT	NA	NA
3	Pulses (60 g/day/head)	39.50 MT	NA	NA
4	Salt (5g/day/head)	3.29 MT	NA	NA
5	Sugar (5g/day/head)	3.29 MT	NA	NA

NB: The FCB Head Office has been requested to expedite the delivery of balance supplies. The essential food items will be stocked by the FCBL at Dakphel FCB godown for 50% of the population for 3 months. Calculation based on the school students' mess entitlement formula.

Measures contd./

- Follow up with FCB Head Office to expeditiously replenish the food supply stock requirements for Zhemgang
- Closely monitor and regulate the distribution of essential items
- Pursue aggressive advocacy and counselling to address panic among population
- Mobilize medical back up teams from the Primary Health Centres
- Activate surge capacity from Gelephu CRRH and National Referral Hospital

Measures contd./

- Mobilize Ambulances from Pantang and Buli PHCs, and from the pool of Government vehicles that have been identified and placed under the charge of the Transport Coordinator
- Monitor and restrict the movement of people out of Zhemgang
- Operationalize the isolation and quarantine facilities
- Carry out contact tracing as per the established protocol in collaboration with RBP

Measures contd./

- Coordinate with counterparts across the border to restore supply chain
- Enforce prohibitions and curfew as and when necessary
- Aggressive advocacy and communication in non affected places
- National level interventions needed to reverse economic downturn

Waste from Isolation Rooms

1. Treat with 0.5% bleaching solution for 25-30 minutes
1. Dispose off the waste by Jigme, Nursing In-Charge Infection Focal Person
2. Dead body
 - Handover the corpse to the deceased family member

Cremation Services Coordinator – Jamtsho, Caretaker & Anita Ria, Ward Girl for Zhemgang, Tenzin Wangda, Ward Boy, Tshering Dorji, Driver, & Samdrup, Caretaker for Yebilaptsa, Kelzang Tshomo, Drungtsho Gom, Panbang Hospital

- Cremation ground identified at Dangkhar, Marangduet, and Tingtibi
- Firewood to be arranged by Jigme Dorji, Chief Forestry Officer, Zhemgang
- Cremation services to be performed by Lam Drakpa of Sonamthgang Dratshang and Lam Neten Karma Galeg of Zhemgang Rabdey

SoPs for Dealing with COVID-19

Emergency Preparedness & Operational Response Plan COVID-19 and following SoPs needs to be put in place:

- SoP for PoE- in place
- SoP for Home/ hotel Quarantine-in place as per MoH
- SoP for designated facilities in place
- SoP for waste management in place
- SoP for proper disposal of dead body and cremation in place
- SoP for partial lockdown of Zhemgang- to seek technical support from MoH

NB: Schools have their own Disaster Management Plan/Preparedness Response Plan

Feedback/Comments:

- Missing information of old age (60+) and young (Minus 5)
 - Conduction of regular taskforce coordination meeting
 - Assigning the roles to the trusted officials
 - To share the screening and surveillance to DLO/DOI
 - Not to panic public and create aggressive awareness on COVID-19
 - To apprise/consult the relevant central agencies/ministries for any kind of support/guidance on the COVID-19
 - SoPs to request from the nearby Dzongkhags and replicate and not to start from the scratch
 - Border management perspective and coordinate with the counterparts for the essential food supply
- Focus on 3 things- Prevention, Preparedness, and Response
- the roles and responsibilities must be clearly specified and fixed accountability to the stakeholders
- Lack of medical doctor in. Panbang Hospital -???

KADRINCHE LA